

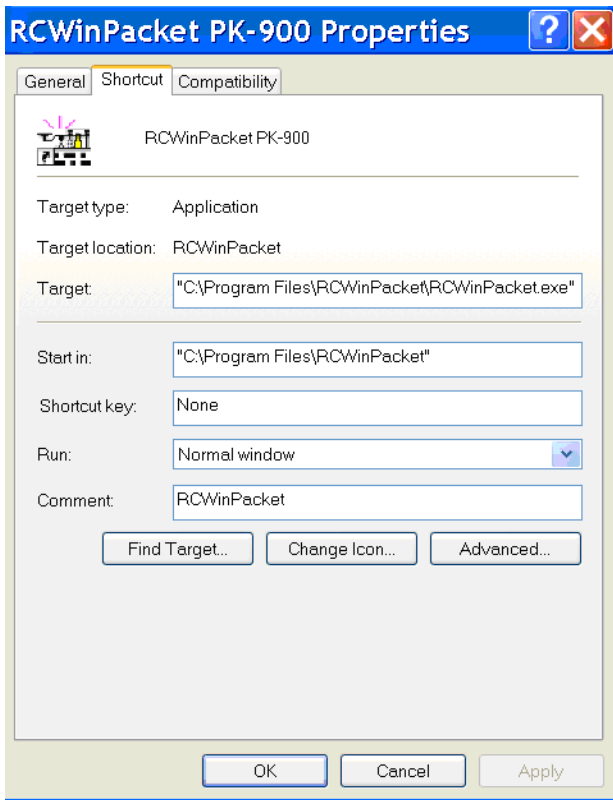
Setting Up *RCWinPacket* for Use with Your Computer and TNC

You can find RCWinPacket on the BCARES web page: <http://bouldercountyares.org/technical/>. Load RCWinPacket on to your computer. You should put it in the C:\Program Files directory where it will create a **RCWinPacket** sub directory.

Look in the directory and you will see several files that start with "RCWinpacketStartup*TNCtype*.txt. Find your TNC configuration file or one close to it and open it with a text editor (like Notepad or WordPad). Any word processor is OK but be sure to save it back as a .TXT file. Saving it as a .DOC file can cause problems. Make any changes needed such as your call and other parameters. Save it by a unique name ('myTNC' or 'myKP3') The 'TAPR' file is the most basic for VHF work. See the bottom of the second page for suggested packet settings for ARES work.

Go to your desk top and right-click on the start-up icon. Go down to "Properties" and click. In "Shortcut", insert the line below into "Target." Change setting to match your TNC and computer. Do not change the syntax.

"C:\Program Files\RCWinPacket\RCWinPacket.exe" startup=RCWinPacketStartup~.txt, settings=9600,N,8,1
space ^ *space ^* *TNC file name here ^* *v space* *might be 1200*

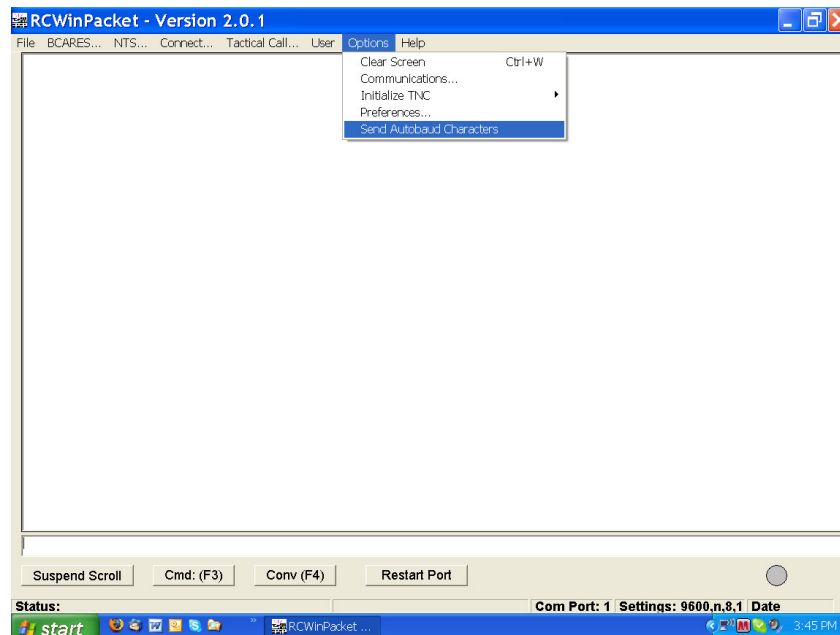


Set-up the other lines as seen in this screen-shot.

Now when you click the icon to start the program it will load the appropriate file and go through the set up procedures for you.

Be sure your TNC is on before you run the RCWinPacket software from the Icon. Use the HELP files for more information.

To check your set-up or to solve problems, you might need to start with the “Options” menu.



“Communications” will allow you to check and change COM ports and other parameters. You can also choose how you want your screen and text to look. Another choice, “Autobaud” will assure you are communicating between the computer and TNC. Choosing “Initializes TNC” will give you choices to manually load your start-up menu or shutdown sequence.

I find that once in a while I need to send “RESET” to the TNC and set everything back to factory settings and start over. I have also found it is very important to go through the proper shut down sequence. Close with the “red X” at the upper right and answer ‘YES’ at the prompt. Or go to ‘File’ and down to ‘Exit RCWinPacket Ctrl+X’ but don’t just shut it off.

Suggested Packet setting for ARES work:

<i>most TNCs</i> [1200,8,N,1]		=	<i>Kenwood D-700</i> [9600,8,N,1] with Xon/Xoff
DWAIT 25	(250 ms)	=	DW 25
MAXFRAME 1		=	MAX 1
FRACK 10	(10 sec)	=	FR 10
RETRY 10	(no more then 10)	=	RE 10
AX25L2V2 ON	(may be preset)		CONS ON CONStamp (time stamp) on
RESPTIME 10	(1.0 sec)	=	RES 10
TXDELAY 40	(400 ms)	=	TX 40
PACLEN 164		=	P 164
MCON OFF	(if your TNC has MCON)		MS ON MStamp (time stamp) on
LFADD OFF	(if your TNC has LFADD)		MB ON MBod (mail box) on

MY (MY CALL, your callsign with no extension, usually)
 MYM (CALL-1, customary for the TNCs Mail box)
 MYA (alias)

In RCWinPacket startup files: \$Caption= **CALL SIGN Radio info** will display the text following the = on the top of the comm screen.

RESET as an immediate command will reset all parameters back to factory default settings.